



We Are Oak Lawn

In This Issue



Response to Focus Groups - 3



Building & Staff Updates - 5



Dallas Responds - 6



New Faces at OLUMC - 8



Bento Box Moment - 10



Gracia Viva

Living the Grace - 11



Coffee on The Corner - 11



Something Fun - 12

p. 214-521-5197

e. communications@olumc.org

a. 3014 Oak Lawn Ave, Dallas, 75219

w. olumc.org



Update From The Pastor

I am so grateful to have been in Rome during the installation of the Timothy Schmalz sculpture 'Angels Unaware', depicting displaced people around the world and throughout history including Mary, Joseph and Jesus.

This statue is important to me because it depicts the scripture that guides the ministry of Oak Lawn United Methodist Church. I pray that the work we do in ministry, does indeed show hospitality to strangers and advance the cause of Love in the world as the scripture instructs.

"Let Love Continue. Do not neglect to show hospitality to strangers, because in doing that you may be entertaining angels without knowing it. Remember those who are in prison, as though you were in prison with them; those who are being tortured as though you yourselves were being tortured." Hebrews 13:1-3.

Something I have become aware of in seeing so much incredible art here in Rome, is that there is intentionality in placement. It is important to see art in its original location in order to understand what the artist intended for you to see and feel because of the context of location.



No matter what angle you are looking from, you cannot see the statue from the Basilica or the Basilica from the statue.

I'm not sure if there is intentional symbolism in this but it seems to be an accurate portrayal of placement and separation between the humanitarian crisis of displaced persons around the world and the church. I don't see too many churches that are intentional about being within view or within reach for many who are displaced around the world. Many are willing to talk about and pray for those who suffer but not get too close.

The good news is that there are angels among us just as the scripture reminds and this piece depicts. In spite of the ways the church can get it wrong sometimes, we can find hope in knowing there are angels among us and that God's love and God's presence is bigger than our narrow or perhaps shallow attempts at hospitality.

At Oak Lawn it is a joy to serve a community that is actively working to make sure that there are no barriers between God and God's people. Thank you for being a part of the work of breaking down walls and letting love continue! In the last 2 months 10 new members have joined the community and I give thanks to God for the ways this will expand our reach as we #letlovecontinue!



Pastor Rachel

Response to Oak Lawn Focus Groups

by OLUMC Staff and Sub-Committee

Firstly, we thank you for being patient with us as we settle into this new season at Oak Lawn. After some transition among our staff, we have found our groove as a team! That said, it's now time to revisit the Focus Group findings and provide some responses to the issues identified. **THANK YOU** for your participation and feedback.

After the focus groups were conducted this past spring, the participants' answers were compiled and presented to the One Board, our leadership team. As Rev. Mara was departing from Oak Lawn (for a summer internship elsewhere), the "next steps" were placed on hold until her return. In preparation for her return, this summer, an additional sub-committee was formed which was comprised of Rev. Mara, Cassie Wohlfarth, Darrell Taylor, and Rev. Rachel to review the focus group findings and consider the ways in which Oak Lawn staff and leadership can and will respond to the content therein. This sub-committee met in September to discuss the findings and compose a response. Overall, the sub-committee agreed that the report can be broken down into three growing edges and four strengths:

Growing Edges:

- Transparency of Church Board Decisions
- Outreach and Administrative Organization
- Personal and Corporate Communication

Strengths:

- Preaching and Worship leadership
- Social Justice and Outreach
- Relationship building and connections among the community

Transparency of Church Board decisions...

As many know already, our church has gone through some evolution in the last year! The day school that resided on the first floor moved out of our building; our sanctuary is undergoing a "face-lift" and the third floor is being renovated. These decisions were not made in isolation by staff, they were brought before and voted on/approved by our One Board which is the voting leadership team at Oak Lawn. The One Board is comprised of 10 chairs plus additional sub-committees. All of the One Board meetings are open to the church to attend and listen; we have and will continue to advertise these meetings so that our congregants do not feel as though meetings are happening behind closed doors --- the doors are definitely open! In the case that sensitive information is discussed (such as HR decisions on employment or benefits) the One Board may hold a closed executive session as indicated on the meeting agenda.

Specifically in regards to the day school, it was a mutually agreed upon decision by both Oak Lawn and the school that it was time for the school to simply move to another location that better suited their needs. Regarding third floor renovations, we are striving to update the church when we have progress to report. Updates are made via social media, the eNews and in this monthly magazine. The decision to start third floor renovation and engage community partners was done to secure alternative sources of revenue for the church. Our building and ministries require consistent support. Thus, our senior pastor has been working with our leadership team to discover new and creative ways to sustain Oak Lawn's vision and mission. In conclusion, please feel free to attend our One Board meetings to stay updated on our church business. Where appropriate, we are happy to share the inner life and work of the church with you! On our end, will continue to promote our leadership meetings more openly and aim for more transparency when big decisions are made.

Outreach and Administrative Organization...

Outreach is very important to us here at Oak Lawn UMC. We often have more outreach to do than we have people to do it! This is not unusual for a church like ours. However, since the turnover of some positions on staff, we have now placed Pat Jones, our Community Coordinator, in charge of our outreach ministries. Pat's immediate supervisor is Cliff Bohaker, the Director of Operations and Finance here at OLUMC. It's safe to say that between Pat's big heart and Cliff's business savvy, our outreach ministries are running more smoothly, more efficiently and with lots of TLC!



Additionally, our GO Chair, Bill Alston, now works directly with our senior pastor Rachel Baughman, to make sure that clergy and staff are abreast of all the needs of our GO ministries (we use “GO” and “outreach” somewhat synonymously here as “outreach” is part of the “GO” section on the OLUMC Bento Box.) Thus, we now have 4 people assisting in the planning, organization and execution of our GO/outreach efforts. However, we need more volunteers! We have several faithful volunteers who serve in the clothing closet, the food pantry, the day shelter and the community meal...but 2-3 is simply not enough. Without proper person-power, these ministries will start to unravel. Thus, we implore you to take part! Help us with just a few volunteer hours a week or a month, and these ministries will only be strengthened.

Regarding administrative organization: it is something all churches struggle with at varying degrees! Sometimes we, as staff and clergy, are part of the issue, and other times we are part of the solution. However, we are constantly searching for ways to maintain professionalism, but not succumb to perfectionism. Our goal is not to have typo-free bulletins, a pitch perfect choir, or clergy without emotions. We celebrate those who desire to give of themselves in their time and talents, and we want to cultivate a community that is slow to anger and quick to forgive. That said, we will continue to strive for excellence knowing that we are human and we will err. Where you have observed administrative disorganization due to our shortcomings, please forgive us and help us cultivate a community of grace. If your expectations of church community are unmet in a way that makes you uncomfortable or have caused you harm, please get in touch with us. Email Rev. Rachel or Rev. Mara to chat; we would be happy and honored to speak with you.

Personal and Corporate Communication...

We understand that the internet is an information jungle. Just because we send a weekly newsletter, print a bigger bulletin or update our social media regularly, it doesn't guarantee our audience is fully informed. We understand! However, we have made a few changes that should streamline the way you get information about what's happening at Oak Lawn:

1. We now have a google calendar embedded on www.olumc.org. ALL Oak Lawn events are listed on this calendar that is visible to the public. When in doubt, you can navigate here for information on when/where/what. It offers a weekly view, monthly view or agenda view! You can also add events to your own calendar.
2. Our weekly eNews has been redesigned to make reading and engagement easier.
3. Our social media and marketing is more consistent so as to spark visual recognition across platforms.
4. Our bulletin has also been redesigned and simplified to draw your attention to the most immediate needs/upcoming events.

With that said, we hope the calendar and print/digital redesigns will help you access the information you need. We are always open to your ideas on how to make communications, on a corporate level, easier to digest. We have considered texting applications as well as hiring a designer to customize an Oak Lawn app (much like Union's App!) but these are not within our budgetary constraints right now. Though, we appreciate the hi-tech folks who suggested them in the focus groups!

Regarding communications on a personal level, we are happy to welcome back Rev. Mara as the Associate Pastor who is handling pastoral care. As she sees it, pastoral care is much more than just attending to ill or home-bound folks (although she does that and loves it!) Pastoral care is intentional, relational, and connectional care of the flock. Thus, she is here to help build authentic relationships with you – alongside Rev. Rachel - so that together they can cultivate a caring community. Here's how you can actually help them! If you notice a friend is not in service, and hasn't been for some time, reach out to them. Let Rev. Rachel and Rev. Mara know when you notice their absence and if they haven't already done so, they will reach out as well. This is very much appreciated as it's sometimes hard to notice everyone that is or isn't around when church only happens once a week!

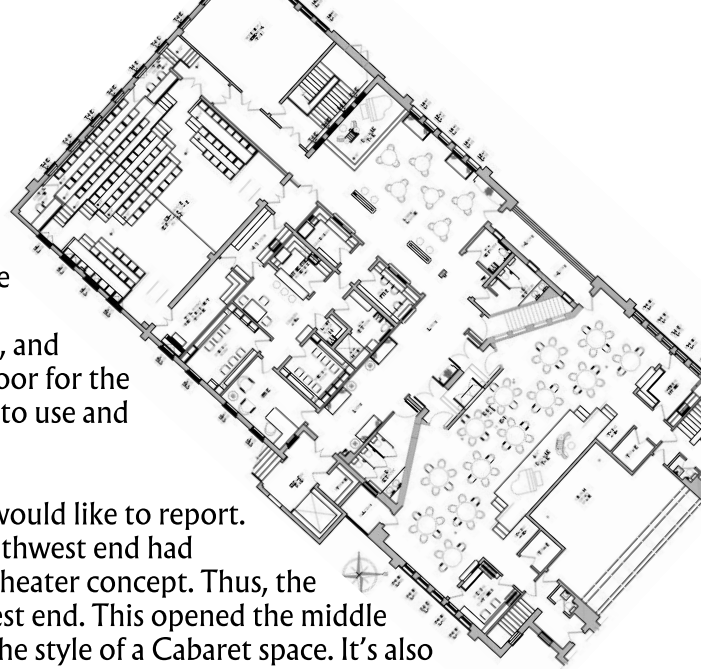
We hope you appreciate these updates from the focus group findings. This is by no means the end of the book on our progress, but rather, perhaps the end of one chapter and the beginning of a new one. We are grateful that you bear with us in all the changes behind and ahead, and we look forward to ways we can make our community stronger.



Building Updates

It is with great excitement that we continue to work to renovate the 3rd floor at Oak Lawn. We are committed to being a hub of transformative Christian community that is inclusive, expansive, and entrepreneurial and as such, opening up the space on the 3rd floor for the arts seemed to be the perfect a way to invite the neighborhood to use and appreciate this space.

Since our last update, there have been a few developments we would like to report. Firstly, once the ceiling was exposed we discovered that the southwest end had higher ceilings with scaffolding; this is better for the black box theater concept. Thus, the decision was made to shift the black box theater to the southwest end. This opened the middle section of the 3rd floor to act as an additional venue option in the style of a Cabaret space. It's also positive in that it provides a bit of a gap/sound barrier between the two ends of the building which we are assuming will host most of the event activity. The northeast end will remain as is, a large event venue suitable for more formal occasions. Also, did you know that we will have a balcony overlooking the Warwick next door? It's our hope that this will be fully utilized and attract more visitors for the variety of performances (dance, theatre, concerts, and receptions) that will take place at Oak Lawn. Additionally, we have recently welcomed two MBA student volunteers, recent graduates of Cox @SMU, who are interested in our unusual work and are writing a business plan for the proposed operations. If you see James Williams and/or Drew Reynolds, they're likely here for research. Stop them and say hello! Lastly, the demolition stage is coming to an end and currently the construction phase is moving into the winterizing and insulation phase. Stay tuned! We'll update you again in November.



JAMES



DREW

Staff Updates



It is with great joy that we welcome Brenda Cowley, OLUMC member, as our newest part time staff. Brenda will be working, starting 10/28, Monday through Thursday from 9:30-3:30 pm as the receptionist for Oak Lawn UMC. The Receptionist is responsible for the following functions:

- Answer incoming phone calls and taking messages
- Greet clients and visitors and provide clients and visitors directions to various parts of our campus
- Assist with administrative tasks as needed to support OLUMC's mission

Help us welcome Brenda (pictured here with her handsome son Christopher) to the team! We are certainly grateful to have her!



Dallas Responds

by Cathy Bryan



In May 2019, Oak Lawn United Methodist Church (OLUMC), along with Faith Forward Dallas, answered the call from Dallas County Judge Clay Jenkins and the Dallas Office of Welcoming Communities and Immigrant Affairs for Dallas to serve as a short-term respite center to help offload the increased volume of asylum seekers being released into the US at our border cities. Specifically, we were asked to establish a respite center to serve as a satellite to establish a respite center to as a satellite to Annunciation House in El Paso, which was receiving over 1,000 migrants per day at that time. As a major transportation hub, and one of the closest “large cities” to El Paso, Dallas was well positioned to serve in this capacity.

Building on the volunteer experience of several congregations affiliated with Faith Forward Dallas and using OLUMC as the central hub and physical location for the Respite Center, Dallas Responds was born as an initiative to meet this need. With Faith Forward Dallas as the convener of volunteers across the faith community and OLUMC providing the physical location and respite center hub, Dallas Responds agreed to receive up to 110 migrants per week (two busses per week) from El Paso for the duration of the summer (June – August).

Dallas Responds and OLUMC quickly established the protocols, processes and documentation necessary to organize volunteers from across the metroplex to support the work of the Respite Center. With over 200 volunteers activated, Dallas Responds was able to provide shelter, food, clothing / toiletries, medical evaluation, travel arrangements, and spiritual / psychological support as Dallas Responds Respite Center welcomed our first group of migrants on June 8, 2019. Welcoming 57 migrants, from three countries, with final destinations spanning over 20 cities, we were able to help complete the last leg of their journey—being united with their US sponsors so they can begin the process for requesting, and proving, their asylum case.

After successfully assisting the first group of migrants to unite with their sponsors, Dallas Responds continued to refine our processes, implemented a volunteer management system, and better defined and documented volunteer roles and functions. It also quickly became apparent that OLUMC, as the central hub and physical location for Dallas Responds, needed a full-time administrator during this three month pilot of the Respite Center, to manage the site and program, which was beyond the scope and bandwidth of the current OLUMC staff. OLUMC, under the direction of Rev. Rachel, was able to obtain an emergency grant from Communities Foundation of Texas to allow OLUMC to hire Cathy Bryan, OLUMC member, as the full time Dallas Responds Site Director for the three month pilot (June – August 2019).

Change in Direction

Shortly after hiring the Site Director, it became apparent that changes in US policy enacted in June began to significantly impact the rate at which migrants were being allowed to enter the US. The impact of the Migrant Protection Program, also known as ‘Remain in Place’, implementation in June, began to significantly decrease in the number of migrants entering El Paso, thus eliminating the need for migrants to be transferred to Dallas.

Over June and July, Dallas Responds and OLUMC, under the leadership of Cathy and Rev. Rachel, worked to understand more fully the impact of ongoing changes in migrant policy. This discovery included both site visits to the border (Courts and Ports Program) and near-border shelters (San Antonio Migrant Center, as well as ongoing networking with colleagues around the metroplex and the state involved in providing direct services to migrants. With focus and attention toward the responsible utilization and deployment of both its donations and volunteers, Dallas Responds and OLUMC worked diligently to determine how best to adapt its service offerings to the highly fluid and unpredictable migrant crisis.

Lessons Learned and Next Steps

One result of our discovery process was to pilot the Dallas Responds Community Hub during the month of August. Volunteers from OLUMC, Union and congregations across Dallas convened to provide a defined set of resources and services for immigrants already established in our community, allowing us to assist approximately 119 local immigrants during the month of August.



A second area of focus has been to participate with Dallas Responds as a short term sponsor for a migrant family settling in the metroplex, including assistance with housing, food, school preparation (uniforms, supplies, vaccinations) and securing legal counsel for their asylum case.

We are sincerely grateful to members of OLUMC who “stepped up” throughout the summer in the various ministries to immigrants. Along with Cathy and Rev. Rachel, we were well represented with members Jody Sheets, Pat Jones, Rob Jones, Billie Jean Baker, Joshua Smith, Gregg Smith, Chuck Aaron, Pastor Isabel and several congregants from Gracia Viva.

Over that past three months of being actively involved in migrant work we have learned much. It remains clear there are many unmet areas of need with this population. Dallas Responds has identified four potential areas of need under consideration for ongoing work:

- 1) Long-term housing and sponsorship
- 2) Short-term Respite Care for migrants entering the US
- 3) Short respite and long-term housing for LGBTQ migrants
- 4) Supportive services (medical, social, mental health) for migrants already living & established in Dallas

Additionally, separate from Dallas Responds, OLUMC is working to discern how to best utilize our facility—in particular the first-floor space—to extend our work in ministry with the marginalized in our own community of Oak Lawn. We covet your prayers and welcome your ideas, experience, and connections as we envision creating a welcoming, vibrant space at OLUMC that will become a hub for many of the services and resources currently absent in the community, in service to all that call Oak Lawn ‘home’.



New Faces at OLUMC!

We asked some of our new members the below questions. Enjoy their responses!



Where were you prior to coming to Oak Lawn?



What do you like to do in your free time?



How did you find Oak Lawn?



What is your favorite ice-cream flavor?

SAMMANTHA



The short version is Chicago via Seattle via California!



I love puzzles, reading, knitting...basically being an 85 year old grandma.



I actually found Oak Lawn through a website named churchclarity.org.



Banana! It's simply the best.

CHRIS



I served as Minister of Music at a sweet, conservative church in a little town outside of Waco, TX.



I'm a dad! I have a 3 year old named Josh and a 7 month old named Hope. Yes, they're adorable and I have lots of pictures, just ask!



In continuation from the first question I went through a painful divorce, resigned from my position and eventually moved to Arlington. Some friends of mine invited me to church with them, they said it was part of the reconciliation ministry with the LGBT community. From the first time I visited, I realized Oak Lawn isn't just a "thoughts and prayers" kind of church. It actively speaks into the darkness and invites people to join the mission. My first Sunday I looked around and saw a bunch of "them's and those's" who united in community around a belief that God loves them.



Well...if you're talking my goto favorite; Chocolate Chip Cookie Dough. If you're talking like an empty half gallon in less than 12 hours well... that's Blue Bell's Butter Crunch.

BEKAH



I went to University Park United Methodist Church.



I like sewing and baking.



My mom got moved to Oak Lawn from UPUMC.



Lemon Custard from Baskin Robins or Strawberry.



RYAN



I'm back to Church after 20 years! I grew up United Methodist and was very active. Some life changes and the loss of my Dad in June made me realize I needed to fill a void in my life that had been missing – and it was Church! Oak Lawn UMC has filled that void for me – and I'm excited and blessed to be a part of this family!



Outside of work and Oak Lawn, my partner Brendan and I like to cook, bake and travel. I read a lot, and love Audible.com!



I have lived in Oak Lawn and always marveled at the beauty of the church – growing up United Methodist meant I wanted to find something familiar. What a surprise when I came inside and found beautiful people and warm hearts – welcoming me – and making me feel like I've been coming my whole life.



CHOCOLATE, CHOCOLATE and more CHOCOLATE!

JOSHUA



I currently live in Grand Prairie, Texas but am looking to move closer to the neighborhood in December. I am a recovering Lutheran (LCMS Synod) and attended Grace Lutheran Church in Arlington. But if you want to know where I grew up, that would be St. Louis, MO. I went to college in a town outside Lincoln, Nebraska.



DANCE! SING! And drink! Hey, no judging. I also love to read and write fantasy, science fiction, comics, and some non-fiction, play video games (Sims 4, Skyrim, and more), and binge TV shows. I do miss spending time in nature, like camping, hiking, running, and especially long walks on the beach. (Okay, so I've never actually had a long walk on the beach, but that doesn't mean it can't happen. For the record, I love a variety of dancing, including waltz, swing, and interpretative. Hmm...dancing on the beach? Now that would be fun.) Most of all, I enjoy a good impromptu dance party with my three young children--two girls and one boy. (Now that should make some of you curious!)



I blame it fully on my friend from the 2018 Beto Senate campaign, Andrew Bennett, who posted on Facebook about Union's grand opening. I didn't read the post thoroughly, thought it was a politically based lecture series, and found myself back in "Jesus culture" ... except this is the farthest I've ever been from negative experiences of the Gospel with Fine Print. Then, Cathy Bryan came over to Union and shared about Dallas Responds, so I came to volunteer. It's amazing to see Christians actually helping marginalized people! I met congregation members, and after that I was sold. I walked into a church building willingly, alone, for the first time in a year. You had me at queer and Jesus' love (and someone performing Defying Gravity at Union).



Vanilla. But let's not stop there! If we're not making a float of some kind, then I'm talking about a whole hot fudge sundae, and I do mean fudge not chocolate syrup. Top it with some whip cream, variety of nuts, and more than one cherry and we are off to the realm of indulgence! Of course, being from St. Louis, I won't turn down frozen custard, either, although I have yet to meet a custard that beats St. Louis' famous Ted Drewes Frozen Custard. Cheers.



CEDRIC



I was in Dallas operating my own business which was a moving company.



I like reading, meditating, painting and do pushups!



I became homeless and others on the street told me I could get a meal and clothes at this church. So I came and have been here since.



Vanilla. I'm simple like that!

KELSEY



I grew up in Dallas but have been gone for 10 years (Austin then Houston), now I'm back as of 2018. Yay!



In my free time I like to read fantasy books, work out, and indoor rock climb.



My now-husband moved into the area in 2014 while I was still living in Houston. I knew I wanted to go to Oak Lawn basically since then, as soon as I moved back here, after researching a bit about the church and their welcoming philosophy.



I'm lactose intolerant 🤢 but when I have plenty of Lactaid my favorite way to consume ice cream is in a milkshake :)

Bento Box Moment

Being rather new to our Church family, I wanted to find a way to meet everyone, introduce myself and have a sense of purpose on Sunday morning. Greeting has been just that for me! On my first Sunday greeting, I met so many people! For me, it's a different "lens" – sure I met people sitting around me during worship and the passing of the Peace. Our Church leaders are great about visiting and catching up before and after the service. But the opportunity to shake hands with almost everyone and make sure they can find their name tag is like some little personal mission of equipping our church family!

I have experienced such a loving and open welcome at Oak Lawn. It truly feels like home. I want the same for the rest of our Church family and for visitors who may join us for worship. And serving in this way has made me feel like I'm contributing to ensure our doors are always open!





We are proud to announce that Gracia Viva is applying to be recognized as a church plant of Oak Lawn UMC. The model by which Oak Lawn is planting Gracia Viva is called the Mother/Daughter model. A basic definition, taken from www.churchplantingbfc.org, is as follows: "A church...which has responsibility for or oversight of another." The imagery inspired by this model is very



intentional: a mother caring for her child and making certain the child is given what it needs to grow and become independent at the proper time. The goal in mothering a Daughter Church is to commit to being guided by the Mother Church en route to becoming healthy, self-sufficient and independent. Established churches may take on the role of a Mother Church in one of two ways: 1) It may itself in a natural sense take on the role of being a Mother Church by establishing its own Daughter Church, or 2) as is the case with Oak Lawn, it might adopt a church plant (Gracia Viva) during its early development. In either case, the same mothering is needed, making certain the church plant is healthy, becoming self-sufficient and will be itself able to equip and empower the saints. As such, keep Gracia Viva and Oak Lawn in prayer as they navigate applying for this status. Being approved will be a positive and productive step for Gracia Viva and we hope to support them in their own journey however possible!

Union
Coffee on The Corner

THE ANSWERS TO YOUR QUESTION:
So, how's Union's new location going?

WORSHIP ATTENDANCE 41% MORE PEOPLE ATTENDING KUNEO & STUDIO

CUSTOMER GOAL 7,577
OPENING - AUGUST 31

CUSTOMER ACTUAL 7,594

5-STAR REVIEWS SINCE OPENING 91% ★★★★★

UNION CEDAR SPRINGS

"Welcome Home"
I can't tell you how many times I have said this phrase in the past month - to community members who have stuck with us through 18 months, scrapping for space and identity - to customers who have never heard of Union - to old regulars we've missed who peer nervously into a room and wonder if this will, once again, be a place for them. "Welcome home" has felt so good to say.

It's more than a greeting. "Welcome home" is a reminder to all of us--those who have been a part of Union for six years and those who are just now finding a home in a cozy shop where sanctuary swims in a warm cup of coffee--a reminder of what kind of home this will be. Our newly-framed home on Cedar Springs will be a welcome one.

- Mike Baughman, Executive Director & Founding Pastor -

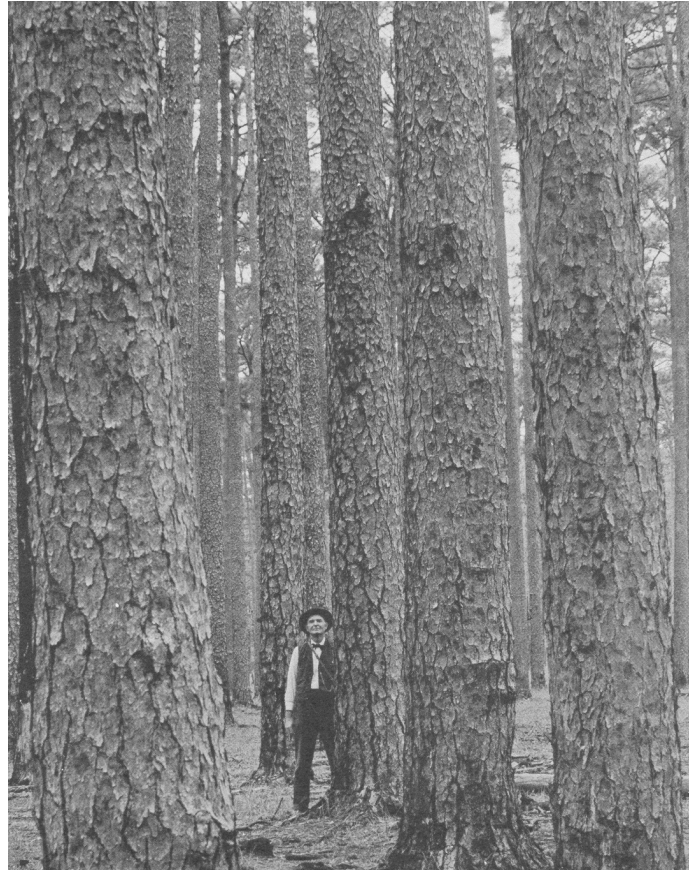
Oak Lawn Methodist Church's Field of Diamonds

by Pat Hicks

There is a wonderful story about a man in Africa who was very content because he owned a large farm and had a lot of money. One day a man came by and they began talking about diamonds. The farmer was told if he wanted true wealth he should acquire diamonds because with just a handful he could purchase not just a farm, but a whole country!

Now he thought of himself as poor, so he sold his farm and all of his possessions, then struck out on a quest to find his own field of diamonds. Eventually his money ran out and he became destitute. Consumed by failure and wretchedness, dressed in rags, he threw himself into the ocean and drowned.

Meanwhile, at his farm the man that bought the land stumbled on a rock as he was walking across his field. He bent down and picked it up. He noticed it was a different color than most other rocks, so he took it home. Days later in the



village, the local jeweler explained to him that he had found a magnificent diamond. As it turned out the entire farm was covered in them and they had been there the whole time. He was wealthy beyond his wildest dreams but had never realized it before.

We think of this man as foolish for not recognizing nor appreciating the blessings he had been given. But, before we become too judgmental let me ask you a question: Have you ever really looked at the old, seemingly almost worn out flooring in your sanctuary under your feet? Now, notice the little man in the picture above. He is not so little really, but because of the size of the trees, he appears to be. Those trees are not Sequoia's but rather a species of Pine trees that once covered at least a third of the United States, or an estimated seventy-five million acres. The picture was taken in 1905 in Bogalusa, Louisiana (where they milled a million board feet a day for decades) and the trees are Long Leaf Pine trees. They were clear cut almost completely off the face of the Earth. And, hopefully, there are ten to eleven thousand acres left, none of it is contiguous.





The trees themselves would grow to 175 feet in height and took up to four hundred years to fully mature. In a natural forest environment growth was painstakingly slow, which resulted in incredibly dense wood and therefore exceedingly tight grain. The very heart of the tree produced wood that, on the hardness scale, is about the same hardness as Red Oak. You might have heard the term, “Heart Pine” which is now a ubiquitous term that has lost its true meaning. That is, the very dense heart wood of Long Leaf Pine trees. Millions and millions of trees were cut down over a period of three hundred years for the wood to build everything from toys, to houses to cars.

They were also highly prized as ship masts and were exported all over the world.

Because the seeds take about a year to germinate, after clear cutting, invasive species would take over the ground where these giants once stood and they could not regenerate. Then in the Great Depression government work programs put men to work planting trees. Mostly Loblolly Pine, because they grow so much faster and could be turned into building materials in just thirty to forty years.

If you notice the Pine trees in East Texas and Louisiana, you will see that not only is Long Leaf Pine now not present, but the largest trees typically date back to this time when the clear cut forests were being replanted. There are not too many one hundred to three hundred year old trees to be found.

Highly prized for the extremely tight grain and beautiful, dark, rich red color, Long Leaf Pine is now only found in old buildings that are still left standing from around the turn of the last century. Typically, back then, flooring was milled into three inch widths because it was so easy and economical to use two by fours, which were also wall studs in home construction.

It is extremely rare to find Heart Pine flooring which is only 2 ¼” in width. Why? Because of the waste factor. For every complete board, about half that much wood ended up being thrown away so that only the best of each board, with the very tightest grain, became the end product. In other words, the best of the best and that is what is in your sanctuary.

Next time you are attending a service there, look down at the floor. It is made out of Long Leaf Pine. Or, I should say, your very own field of diamonds. Your wood floor is made from trees that were upwards to four hundred years old....in 1916. After you’ve done the math, look closely at the grain and the length of the boards. Picture the trees you see next to that little man and try to imagine what the air smelled like when they were a hundred years old in 1614. What was walking under them on the ground when they were two hundred years old in 1714? What sounds were in the air and what people would you have





seen? Then realize that when these trees were two hundred years of age, the Revolutionary War was still more than a half century in the future.

Sometimes rarity, value and blessings are hiding, unrecognized, in plain sight. Whether diamonds in the form of old wood, faith in the form of appreciation when we take notice of the fingertip of God, or works in the form of preservation, your sanctuary still has much to teach. It really is yours, and your church's, very own

field of diamonds.



OAK LAWN UNITED METHODIST CHURCH

Sunday Morning Grow Study 9:30 A.M.

Sunday Morning Worship 11:00 A.M.

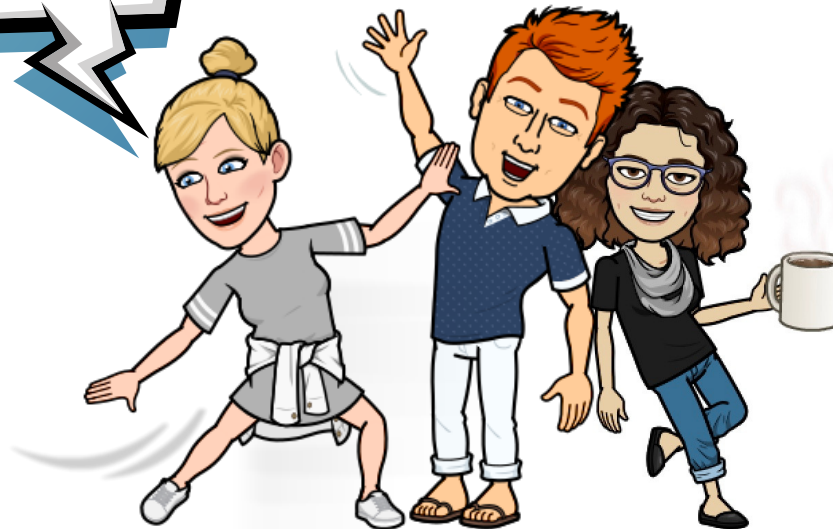
Mañanas de Domingos de Adoración 12:30 P.M.

Wednesday Communion 12:00 P.M.

3014 Oak Lawn Avenue,
Dallas TX 75219
www.olumc.org
214-521-5197

Rev. Rachel Griffin Baughman, Senior Pastor Rachel.Baughman@olumc.org
Rev. Mara Morhouse, Associate Pastor Mara.Morhouse@olumc.org
Rev. Gregg Alan Smith, Associate Pastor Gregg.Alan.Smith@olumc.org
Cliff Bohaker, Director of Finance & Operations Clifton.Bohaker@olumc.org
Curtis Baker, Facilities Manager, Curtis.Baker@olumc.org
Pat Jones, Community Relations Coordinator Pat.Jones@olumc.org

Interested in helping with this
publication? Email me at
Communications@olumc.org



/OLUMC



@OLUMC



@OAKLAWNUMC



OLUMC.ORG

Oak Lawn UMC exists to be a hub of transformative Christian community that is inclusive, expansive, and entrepreneurial.

We are inclusive

Welcoming and caring for all, particularly those on the margins.

We are expansive

Connecting with new people beyond the walls of our church.

We are entrepreneurial

Willing to be courageous and take risks in faithfulness to God's call.

Union




Gracia Viva
¡Viva la Gracia!

OAK LAWN
UNITED METHODIST CHURCH

